

**CENTER SUPPLIES
&
LANE CARE**

FROM OPEN PLAY TO LEAGUE PLAY TO TOURNAMENTS, IT'S EASY TO CONDITION YOUR LANES YOUR WAY WITH QUBICAAMF.

Consider the advantages of QubicaAMF lane conditioning, cleaning and maintenance products and it's easy to see why thousands of center mechanics around the world consider them the best value for the money.

- More ways to condition your lanes – Condition your lanes for league play open play, or just higher scoring – you name it – and there's a long-lasting QubicaAMF lane conditioner that satisfies your customers, and protects your lanes.
- No other lane care products are easier to use – We formulate QubicaAMF lane conditioning, cleaning and maintenance products to be the easiest to use in the industry. Our lane conditioners don't even require shaking.
- Consistency you and your bowlers can count on – Bowlers depend on lane consistency; and you can depend on each long-lasting QubicaAMF conditioner to provide it. Day in and day out, season to season.
- Proven products that prove themselves every day – Our biggest customer, the world's largest chain – AMF Bowling Centers – uses QubicaAMF lane care products on over 14,000 lanes. From approach to pin-deck, no one knows lane care better than we do at QubicaAMF, or provides more dependable service and support.

WORLDWIDE READQUARTERS - 8100 AMF Drive - Mechanicsville, VA 23111 - USA
Tel. (804) 569-1000 - Fax: (804) 730-4464 - Toll free 1-866-460-QAMF (7263)
www.qubicaamf.com - info@qubicaamf.com

TABLE OF CONTENTS CENTER SUPPLIES & LANE CARE

LANE CONDITIONING - UTOPIA	4
LANE CONDITIONING - REACTOR	4
LANE CONDITIONING - VISFLO	5
CONDITIONER SUPPLIES	6
LANE CLEANING	6
LANE CLEANING - DUSTER CLOTH	7
APPROACH MAINTENANCE	8
CENTER MAINTENANCE	9-11
LANE MAINTENANCE EQUIPMENT SUMMIT - MAGNUM - SILVER BULLET	12-14
LANE MAINTENANCE EQUIPMENT SUMMIT S - MANUAL - KITS	15
LANE MAINTENANCE EQUIPMENT EXPRESS	16
LANE MAINTENANCE EQUIPMENT CENTURY 100 - VLS - GEMINI - ULTRALITE	17-19
BUMPER PARTS	20-23
LANE PARTS	24-25
LANE FINISH PRODUCTS	26-27
LANE APPLICATORS & REFILLS	28
RESURFACING SUPPLIES	29
QUBICAAMF SMART BALLS	30-32
GLOWING ACCENT DUAL-SIZED RENTAL SHOES	33

UTOPIA

Utopia is designed for ultra performance, durability, and protection against particle enhanced balls under extreme conditions (e.g. high lineage, tournament play, and poor lane surfaces). It's easy to use. Utopia may be applied **through wickless machines or wick/pad machines equipped with tank heating systems***. Utopia is an ultra high viscosity, high lubricity, lane lubricant modified with synthetic additives. It provides the outstanding protection of an ultra high viscosity conditioner, while eliminating the negative side affects of “drag” on the bowling ball as is experienced in typical high viscosity lane conditioners. Utopia is homogenous, and **DOES NOT REQUIRE SHAKING**.

UTOPIA		
UTOPIA	2 x 2.5 gal	294006095
UTOPIA	4 x 1 gal	294006094
TANK HEATING SYSTEM		
Summit Tank heater kit		294300001
Magnum Tank heater kit		294300002



OIL FILL BOTTLE



Easy to use. Very forgiving. Instant results.

Each new formulation of Reactor is designed to achieve optimal ball reaction in the mid-lane for predictable, consistant scoring on any surface with any lane machine.

Depending on the lane surface at your center, you'll want to choose one of these:

Reactor LL (Low Lubricity) Specifically designed for synthetic lanes, and harder lane finishes.

Reactor ML (Medium Lubricity) Specifically designed for most lane surfaces.

Reactor HL (High Lubricity) Specifically designed for softer wood finishes, severely worn lanes, and polymer film covered lanes.

Product Code	4 x 1 gallon	2 x 2.5 gallons
LL:	294006064	294006065
ML:	294006050	294006049
HL:	294006074	294006075
Oil Fill Bottle		
Product Code	SA1227	

REACTOR®



VISFLO® 12.7



100% solids lane conditioners don't have to have a high viscosity. Visflo 12.7 is a low viscosity lane conditioner for centers that want to use a traditional style lane conditioner but without the volatile solvents that degrade your lane condition.

Product Code	294006040	2 x 2.5 gallons
	294006039	4 x 1 gallon

VISFLO® 19.5



Medium viscosity 100% solids lane conditioner designed for use in both wick and wickless conditioning machines. Excellent conditioner pattern durability, minimal carry down.

Product Code	294006004	2 x 2.5 gallons
	294006025	4 x 1 gallon

VISFLO® 32.5



High viscosity 100% solids lane conditioner for use in both wick and wickless conditioning machines. Excellent conditioner pattern durability, minimal carry down.

Product Code	294006009	2 x 2.5 gallons
	294006026	4 x 1 gallon

VISFLO® 39.0



100% solids super high viscosity lane conditioner. For use in both wick and wickless conditioning machines. Excellent conditioner pattern durability, minimal carry down. Highest viscosity conditioner for a wick machine.

Product Code	294006042	2 x 2.5 gallons
	294006041	4 x 1 gallon

VISFLO® 48.5



Ultra-high viscosity 100% solids lane conditioner for use with wickless conditioning machines. Highly durable, tenacious conditioner with minimal carry down. If you're using a wickless conditioning machine, this is the lane conditioner you should be using.

Product Code	294006032	2 x 2.5 gallon
	294006031	4 x 1 gallon

CONDITIONER SUPPLIES

LANE CONDITIONER CONTAINER



If you mix lane conditioners, you should mix them accurately. The Qubica AMF lane conditioner mixing vessel eliminates messy mixing and organizes storage and dispensing of your unique conditioner blends. Holds 5 gallons.

5 gallon mixing container (complete)

Product Code 294080111

Spigot for Mixing Container

Product Code 294007079

Lid for Mixing Container

Product Code 294004496

CONDITIONER	VISCOSITY	SURFACE TENSION	WICK MACHINES	WICKLESS MACHINES
Reactor	Variable	34	Yes	Yes
Utopia	81*	33	Yes*/No	Yes
Visflo 12.7	12.7	31.8	Yes	Yes
Visflo 19.5	19.5	32.6	Yes	Yes
Visflo 32.5	32.5	33.8	Yes	Yes
Visflo 39.0	39.0	34.1	Yes	Yes
Visflo 48.5	48.5	34.6	No	Yes

*Highest viscosity allowable by United States Bowling Congress. Can be used in wick/pad machines equipped with oil tank heating systems.

FORMULA ACC®



Formula ACC is an All Conditioner Cleaner specifically formulated to remove today's hi-tech lane conditioners from the lane surface. Formula ACC's dual action cleansing attacks a wide variety of oils and synthetic components found in today's conditioners. Formula ACC is only recommended for vacuum stripping and may be diluted as high as 10:1 depending upon each center's specific needs.

Product Code 294006047 2 x 2.5 gallons

FORMULA 388®



Specially formulated non-butyl cleaner designed for vacuum stripping or hand cleaning lanes. Designed for an initial mix ratio of 1 part Formula 388 to 5 parts water.

Product Code 294006021 2 x 2.5 gallons

CLEANER SUPPLIES

LANE CLEANER MIXING CONTAINER



Take advantage of the savings this container will bring by accurately mixing your lane cleaners with water. Provides for neat, clean storage and dispensing.

Product Code 294080107

Spigot for Mixing Container

Product Code 294007079

Lid for Mixing Container

Product Code 294004496

VISCLEAN CONCENTRATE

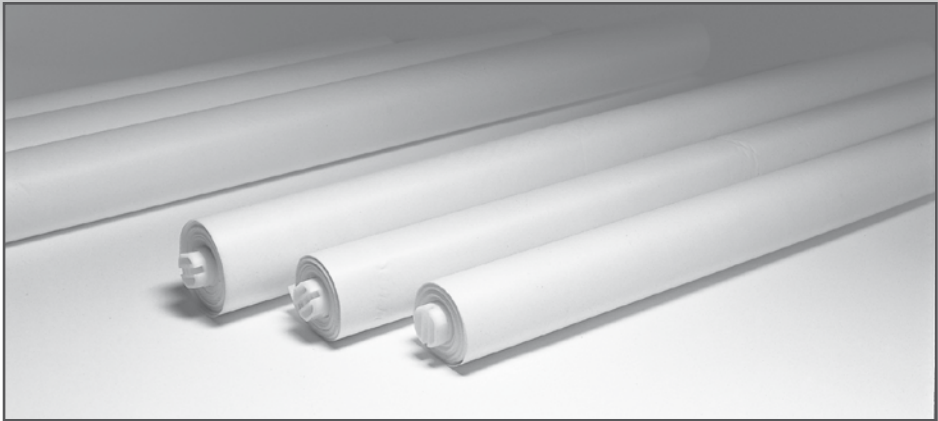


Specially formulated cleaner concentrate designed for use when vacuum stripping lanes. Works with all vacuum lane strippers. Initial mix ratio of 1 part VisClean to 10 parts water. You won't find a stronger cleaner and you'll save on freight.

Product Code 294006033 Box of 6 quarts A & 6 quarts B

CLEANER	VACUUM STRIPPING	MANUAL STRIPPING
Formula ACC	Yes	No
VisClean Concentrate	Yes	No
Formula 388®	Yes	Yes

MAGIC TRIANGLE DUSTER CLOTH AND CLEANING CLOTH



The Qubica AMF Magic Triangle Duster Cloth is an unbeatable lane duster. Using the Duster Cloth is a time-tested method of keeping your lanes dust free and your bowlers clean and happy.

40 1/2" wide cloth, wooden core and nail drive, 33 1/3 yards per roll, 3 rolls per carton. Fits all maple dusters.

Product Code 294008400

40 1/2" wide cloth, wooden core and metal drive end, 33 1/3 yards per roll, 3 rolls per carton. Fits K&B Lane Dusters and Perry Austen Magic Lane Duster.

Product Code 294008410

42" wide cloth, wooden core and drive end, 33 1/3 yards per roll, 3 rolls per carton. Fits AMF Unimatic machines, AMF 42" Lane Duster and AMF Super Duster.

Product Code 294008423

43" wide cloth, wooden core and drive end, 33 1/3 yards per roll, 3 rolls per carton. Fits DBA Lane Runner, DBA Aluminum Dusters and DBA Lane Maid.

Product Code 294008430

43" wide cloth, plastic core and drive end, 33 1/3 yards per roll, 3 rolls per carton. Fits 44" AMF and older Brunswick lane dusters.

Product Code 294844142

CLOTH PART #	WIDTH	CORE/DOWEL	
294008400	40 1/2"	Wood with nail drive	
294008410	40 1/2"	Wood with metal drive end	
294008423	42"	Wood	
294008430	43"	Wood	
294844142	43"	Plastic	
294008443	43"	Plastic	
294008460 Cleaning Cloth	43"	Plastic	



43" wide cloth, plastic core and drive end, 25 yards per roll, 4 rolls per carton. Fits all QubicaAMF Century Machines and Hot Dusters®, Perry Austen Champion, Pierce & Stevens Lane Pro Duster, new Brunswick Lane Duster, DBA Lanewalker and Excel.

Product Code 294008443

CLEANING CLOTH

43" wide cloth, plastic core and drive end, 17 yards per roll, 4 rolls per carton. Fits DBA and Kegel made machines.

Product Code 294008460

REUSABLE PLASTIC CORE



Each roll of Magic Triangle duster cloth comes on a reusable plastic core with double face tape for easy trouble-free take-up. Use this plastic core as your take-up roller, and throw the whole dirty roll away! No more unraveling or cutting off old, dirty, oily cloth.



APPROACH SUPPLIES



3M™ Doodleduster™ Dusting Tool
Convenient and efficient to use, the Doodleduster uses disposable cloth for dusting approaches. Replacement cloth has 250 sheets per roll. Does not include handle. Recommend using QubicaAMF's Multi-Use Telescoping Handle, Product Code 294007091.

Product Code 294007040
294007042 Replacement Cloth

36" Approach Mop
Simple design with machine washable mop head

Product Code 294007059 Mop
294007060 Refill

APPROACH CONDITIONER

SURE SLIDE



Spray on and buff approach conditioner specially formulated to improve bowler slide on synthetic approaches. Recommend using Buffing Pad, 294007090 with Rotary Floor Machine for easy application. Not for use on wood approaches.

Product Code 294007038 2.5 gallon

APPROACH CLEANERS

APPROACH SPOT CLEANER



Solvent style liquid approach spot cleaner for all approach types.

Product Code 294007037 1 gallon

3M™ TROUBLE SHOOTER



Aerosol approach cleaner ideal for spot cleaning synthetic approaches.

Product Code 049006638 21 oz.

GENERAL SUPPLIES



LANE & GUTTER MOP
Cleans and dusts lane and gutters at the same time. Removable, washable mop head.

Product Code 041003722 mop
041003711 refill

GUTTER MOP
Cleans and dusts gutters. Comes with one removable, washable mop head. 60" handle.

Product Code 041003921 mop
041003911 refill

LANE BRUSH
Full width lane brush for sweeping the entire lane at one time. 42" wide brush head.

Product Code 041003542

LANE TOWEL
Replacement towel for Strip 'N Dust and for general lane maintenance.

Product Code 294118237

MULTI-USE TELESCOPING HANDLE
For 3M™ Doodleduster, brooms, mops and other general center maintenance items, this new adjustable-length aluminum handle makes cleaning hard-to-get-at places much easier. Adjust its length according to the job, the tool, or the worker's size.

Product Code 294007091

HANDY SPRAYER - HUDSON
For centers that want to spray extra lane conditioner on the heads of their lanes, the Hudson sprayer is the time proven answer. Holds 2 quarts of conditioner.

Product Code 730025000

BASSINE BRUSH
Soft bristle brush for lane and general bowling center maintenance.

Product Code 294007061

ROTARY PAD AND SANDSCREEN DRIVE HEAD
Driver assembly for rotary pads and sand paper.

Product Code 081001087

ROTARY SANDING SUPPLIES
3M™ Brand Black Thick Line Stripper Pads.

Product Code 294007006-1 18" diameter
294007006-2 19" diameter

3M™ Brand Natural Blend Tan Floor Pads.

Product Code 294007007-1 18" diameter

BUFFING PAD
Loop cloth pad ideal for use with rotary floor machine to clean and buff synthetic approaches. Pad provides better performance than other types of material and is extremely durable. Machine washable.

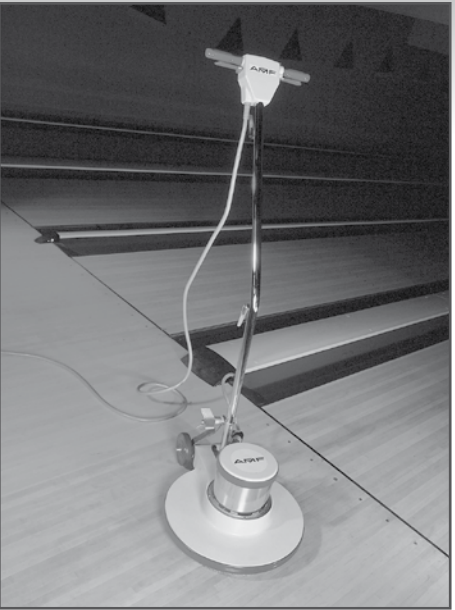
Product Code 294007090

PIN FORK



Product Code B158100

ROTARY FLOOR MACHINE



20" Rotary Floor Machine with brush. Can be used for floor or lane maintenance. Equipped with special contour handle and heavy-duty power cord. Comes with bassine brush.

Product Code 041007400 115 volt, 50/60 hz.
041740096 230 volt, 50/60 hz.

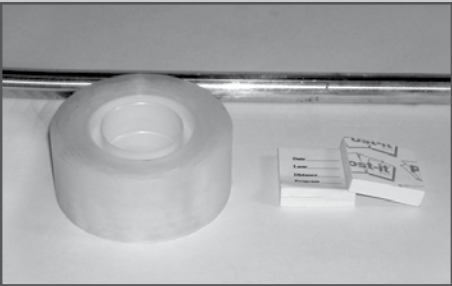
BOWLING CENTER VACUUM



This wet or dry vacuum is strong, convenient and comes complete with 10' crushproof hose, two piece extension wand, squeegee tool, floor brush, crevice tool and rug tool. Fifteen gallon tank, no-stoop handle, 25' safety cord and non-marking wheels make this vacuum ideal for all around bowling center use.

Product Code 045007200 110 volt, 60 hz.
045720096 220 volt, 50 hz.

TAPE READER SUPPLIES



3M™ LANE TAPE
Official tape used with tape pick-up units to monitor lane conditions and lane patterns.
1” wide x 36 yds long.

Product Code **294004057** **roll**

SELF-ADHESIVE LANE TAPE EDGE MARKER TAB
Self-adhesive pads of white lane edge markers preprinted with date, lane number, lane distance and lane machine program number lines. No more cutting white tape to size. Specially made to be released from the lane and captured by the 3M lane tape. 50 sheets per pad. 10 pads.

Product Code **294110947**

ALUMINUM TAPE PUSH ROD
Replaces wood push rod supplied with the lane monitor tape pick-up unit. During use, the wood rod may break, particularly when using heavy pressure to read high units of oil. Sturdy, durable rod is designed to provide years of use.

Product Code **294110946**

LANE MONITOR™
Product Code **61860225000** **Computer Lane Monitor™ 110V**
Product Code **61860225220** **Computer Lane Monitor™ 220V**
Product Code **61860162000** **Calibration Kit**
Product Code **61860155000** **Recorder**
Product Code **61100261000** **Roller**
Product Code **61100261000** **Tape Advance Roller**
Product Code **61100060-000** **UV Bulb Tape Reader For computer Lane Monitor™.**

Monitor™ and Computer Lane Monitor™ are trademarks of the Brunswick Bowling & Billiard Company and are not affiliated with QubicaAMF.

FRESH CARE



Spray used to deodorize hard, non-porous surfaces, bowling equipment and rental shoes. Available in aerosol or liquid form.

Product Code **294007058** **16 oz. aerosol**
047000100 **1 quart liquid with exact burst trigger sprayer**

PINKKEEPER® PIN CLEANER



Specially formulated to reduce sticking pins which results in fewer pile ups or pins sticking in deck chutes. Water based detergent pin cleaner designed for use in an automatic pin cleaning machine.

Product Code **294006020** **2 x 2.5 gallons**

AP3 CLEANER



All purpose cleaner. Safe on all washable surfaces. Use diluted through trigger sprayer to clean counter tops, furniture, ball returns and scoring console. Also may be used for mop and bucket floor cleaning. Effective at removing nicotine and other common bowling center stains.

Product Code **294006045** **4 x 1 gallon**

AERO ORANGE SOLVENT



No-residue solvent aerosol cleaner. Recommended for general degreasing of parts, by spray or wipe on/ wipe off method. Product will not rust parts. Effective at removing adhesives, such as pit board glue, and is safe to use for critical parts cleaning and other applications where water and residue cannot be tolerated. Also recommended for motor cleaning and other similar applications. Ideal for use on plastic or urethane pinspotter/pinsetter parts.

Product Code **294006044** **14 oz.**

ORANGE CD



Heavy-duty chemical degreaser recommended for removing oils and grease from most surfaces. May be used straight or diluted for manual wipe on/wipe off parts cleaning applications. Safe on aluminum, galvanized metal, copper, steel and tin parts when a water-based solvent is acceptable. Also may be used to clean concrete floors and aluminum pinspotter/pinsetter parts.

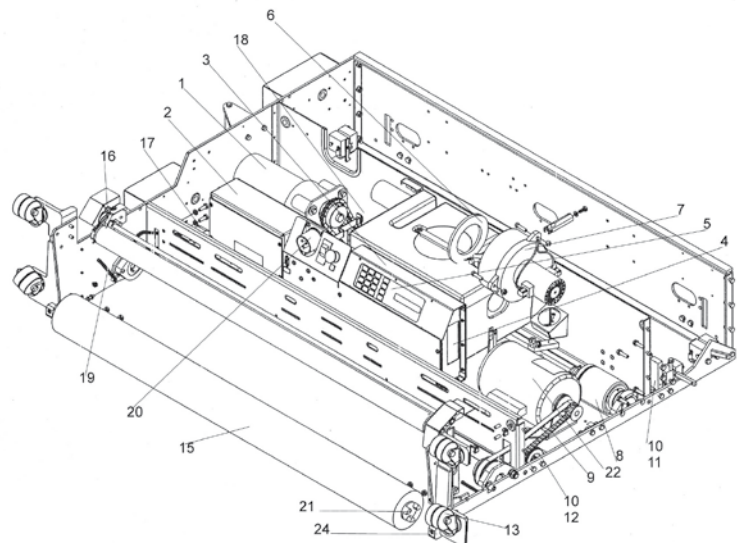
Product Code **294006046** **4 x 1 gallon**

PETRO FREE



PetroFree is a product of the latest solvent technology. It's non-petroleum based and contains no ozone depleting chemicals. When diluted, PetroFree may be used as a general purpose cleaner. Effective on heavy grease, oil, asphalt, adhesives and floor tile mastic. Safe on metals. Can be used in parts washers. Contains surfactant, not recommended for use on electric motors.

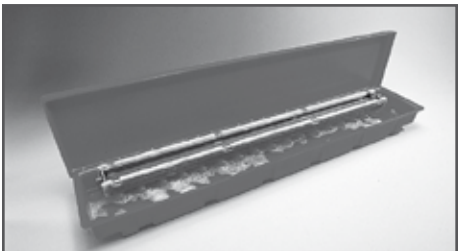
Product Code **294006043** **4 x 1 gallon**



DRAWING#	PART	DESCRIPTION
1a	02770	Drive Motor 110V Summit / Magnum
1b	02786	Drive Motor 220V Summit / Magnum
1c	02526	Drive Motor 110V Silver Bullet
1d	02256	Drive Motor 220V Silver Bullet
2a	SA0250	Speed Control Box 110V New
	780250	Speed Control Box 110V Rebuilt
2b	SA0260	Speed Control Box 220V New
	780260	Speed Control Box 220V Rebuilt
3a	294002529	Summit Control Box New
	522942072	Summit Control Box Rebuilt
	522942505	Summit S Control Box Rebuilt
3b	780247	Magnum / SB Control Box New
4	SA0249	Relay Board New Summit / Magnum
	780249	Relay Board Rebuilt Summit / Magnum
	02375	Relay Board Silver Bullet
5	294002127	Control Box Overlay
6	A8307	Tank Seal
6a	294002547	Tank Seal for 220V Machine Serial # 200910010003 and Up
7a	02214	Vacuum Motor 110V
7b	02255	Vacuum Motor 220V
8	294115404	Drive Wheel (Universal)
9	03099	Buffer Drive Belt
10a	294002011	Guide Roller Assembly Summit

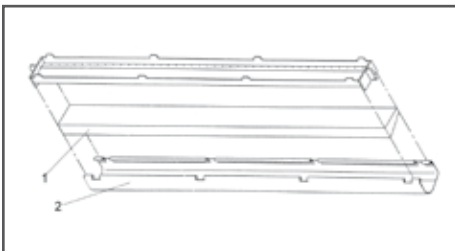
DRAWING#	PART	DESCRIPTION
10b	294002016	Guide Roller Shaft Summit
10c	294002025	Guide Spring Summit
11a	A5530	Front Guide Roller Shaft Magnum
11b	SA1006	Front Guide Roller Magnum
11c	A0030	Front Guide Roller Spring Magnum
12a	A0022	Guide Roller Shaft Magnum
12b	SA1005	Guide Roller Magnum
12c	A0024	Guide Roller Spring Magnum
13	04292	Dual Caster w/dust cap
14	A0586	Pivot Caster Block
15	SA1182	Buffer Brush Assembly
16	A0583	Roller Spring
17	02767	Transfer Roller Motor
18	294002542	Counter Wheel Assembly (not show)
19	A0409	Buffer Return Spring
20	294002218	Panel Mount Power Inlet
21	A0420	Brush Drive (Summit S)
22	RP107	Buffer Motor 110V (Summit S)
22a	RP186	Buffer Motor 220V (Summit S)
	294002268	CE Buffer Motor
n/a	294002359	Power Cord Assembly Newer Summit
n/a	294002219	Connector Body Newer Summit
n/a	02238	Power Cord Only (no ends)

CLEANER PAD STORAGE TANK



Product Code SA 0305

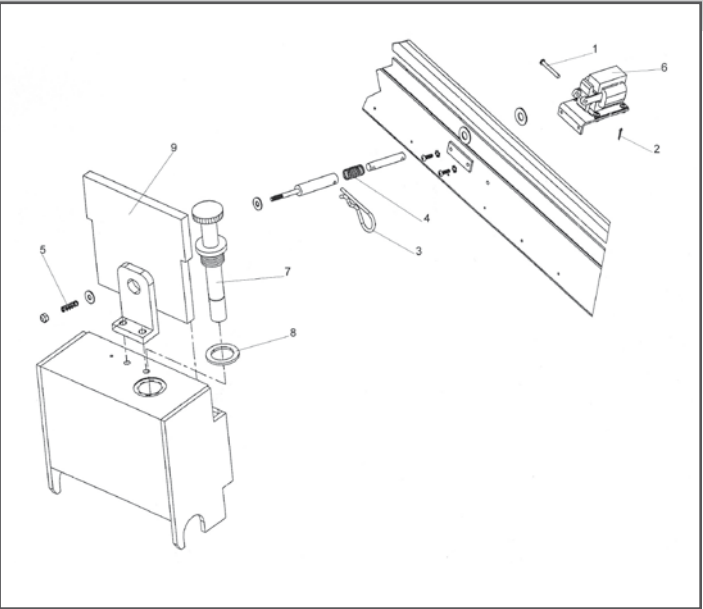
CLEANER PAD ASSEMBLY



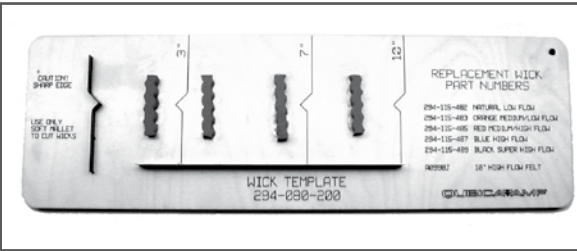
1	B8032	Cleaner Foam Pad Summit /Mag/SB
	294005099	Cleaner Pad Upgrade Kit Replacement Foam
2	C0776	Cleaning Fabric Summit / Mag
	SA8527	Cleaning Fabric Velcro
	294005098	Cleaner Pad Upgrade Kit Replacement Fabric

OIL TANK ASSEMBLY

DRAWING#	PART	DESCRIPTION
1	01038	3/16 Dia x 1 1/2 Clevis Pin
2	01080	1/16 Dia x 1/2 Cotte Pin
3	294001007	Hitch Pin
4	294002174	Oil Tank Linkage Spring
5	A5038	Oil Tank Return Spring
6	294002031	Solenoid 110v Machine
29	4002276	Solenoid 220v Machine
7	SA0213	Dipstick
8	04093	Viton Washer
9a	294115490	Replacement Foam Strip SHO (#4)
9a	294115488	Replacement Foam Strip HO (#5)
9a	294115486	Replacement Foam Strip MHO (#6)
9a	294115484	Replacement Foam Strip MO (#8)
9a	294115482	Replacement Foam Strip MLO (#10)
9b	612551001	Standard Foam Wick Kit (7-3-10 tank Config.)
9c	A0998C	Grey High Flow Wick 3"
9c	A0998D	Grey High Flow Wick 4"
9c	A0998E	Grey High Flow Wick 5"
9c	A0998F	Grey High Flow Wick 6"
9c	A0998G	Grey High Flow Wick 7"
9c	A0998J	Grey High Flow Wick 10"
9d	294080127	HVO Wick Kit-two 10" grey high flow, two 7" foam wicks & two 3" foam wicks.
	294080200	Foam Wick Cutting Template. Precisely cuts foam wicks to the proper contour

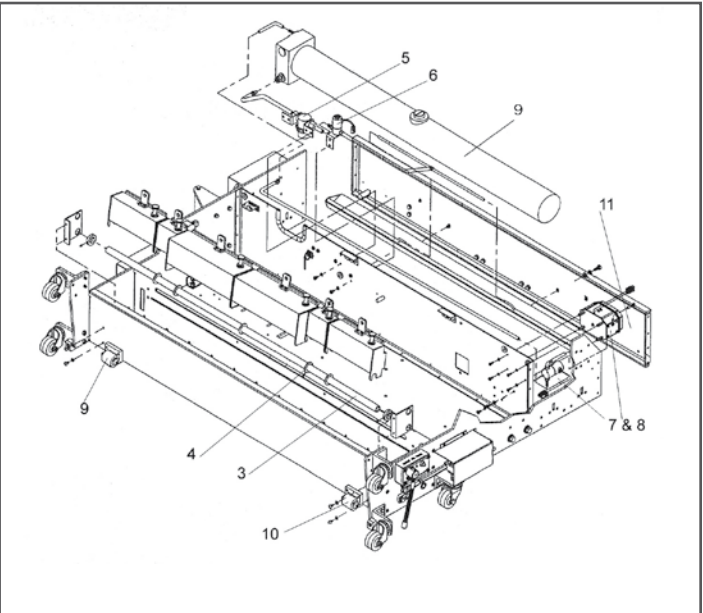


FOAM WICK CUTTING TEMPLATE

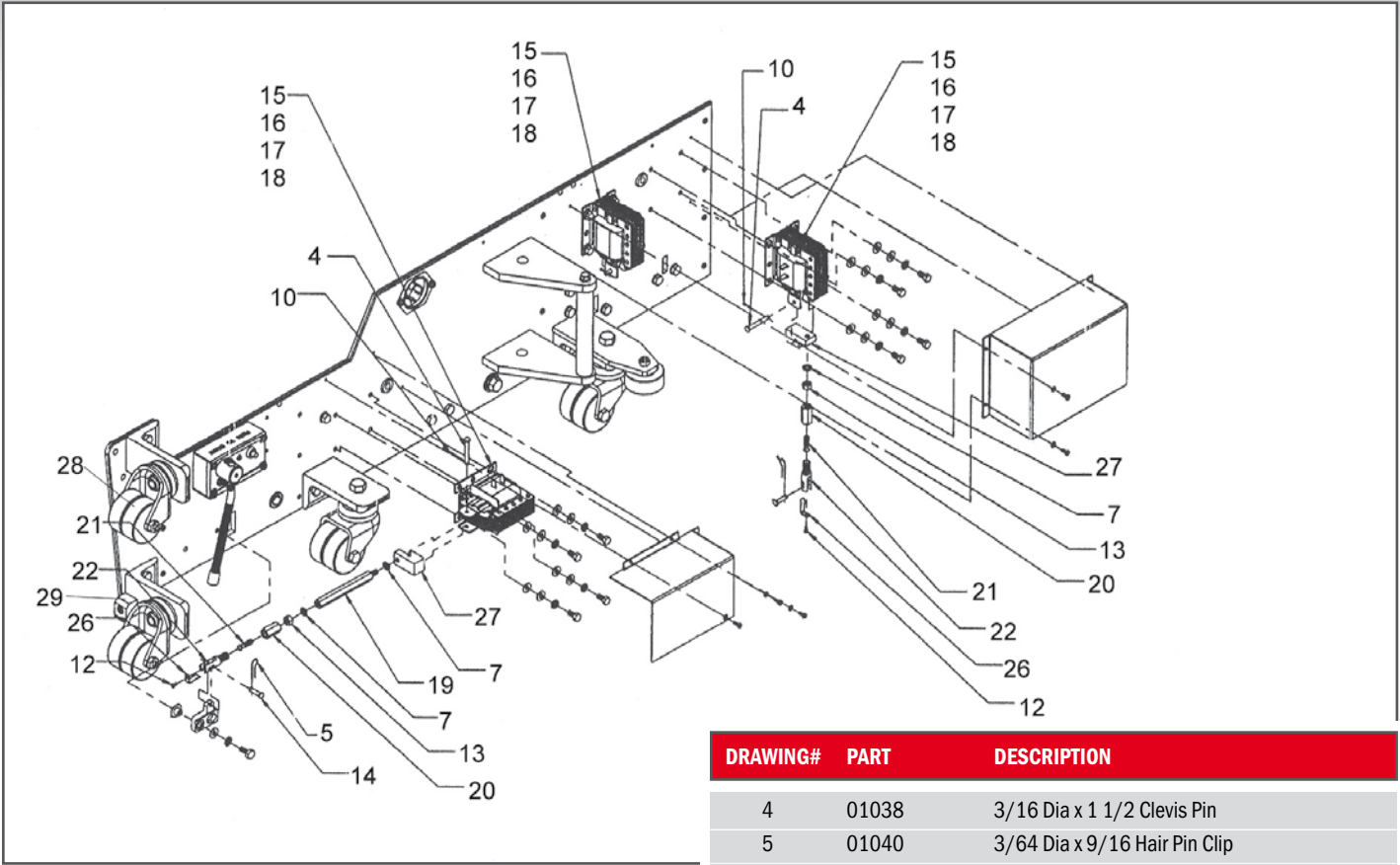


OIL TANKS, CLEANER TANK & DRIP TRAY

DRAWING#	PART	DESCRIPTION
1a	SA2025	Small Compressor Prewired 110V
1b	SA2026	Small Compressor Prewired 220V
3	294002019	Tank Mounting Tube
4	A0884	Tank Spacer
5	SA0264	Filter Mount Assy
6	SA0265	Kip Valve Mount Assy
7a	SA0302	Compressor Solenoid Valve Assy 110V
7b	SA0303	Compressor Solenoid Valve Assy 220V
8	SA2025	Small Compressor 110V
8a	SA2026	Small Compressor 220V
9	SA0175	Dash end Roller Assy Left
	294002528	Dash end Roller Assy Left for Summit S
10	SA0176	Dash end Roller Assy Right
	294002527	Dash end Roller Assy Right for Summit S
11	SA3012	Duster end Plate Roller Assy
12	SA0263	Cleaner Tank Assembly

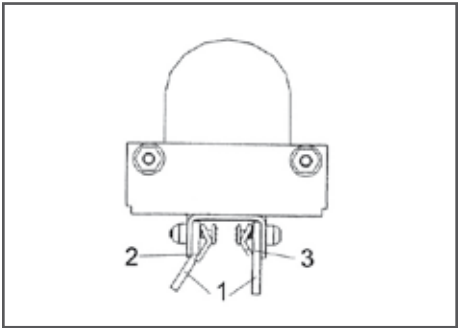


FRAME ASSEMBLY



DRAWING#	PART	DESCRIPTION
4	01038	3/16 Dia x 1 1/2 Clevis Pin
5	01040	3/64 Dia x 9/16 Hair Pin Clip
7	01053	1/4 External Lock Washer
10	01080	1/16 Dia x 1/2 Cotter Pin
12	01135	4-40 x 1/4 Pan Head Machine Screw
13	01214	1/4-28 hex Steel Machine Nut
14	01215	3/16 Dia x 3/4 Clevis Pin
15	294002033	Solenoid 110V
16	294002032	Solenoid 110V
17	294002074	Solenoid 220V
18	294002075	Solenoid 220V
19	A0344	Buffer Linkage Extension
20	A4036	Pressure Adjusting Nut
21	A4037	Pressure Adjusting Swivil
22	A4038	Pressure Linkage Rod
26	A4055	Detent Spring
27	A8328	Solenoid Linkage Block
28	04292	Dual Caster with Dust Cap
29	A0586	Pivot Caster Block

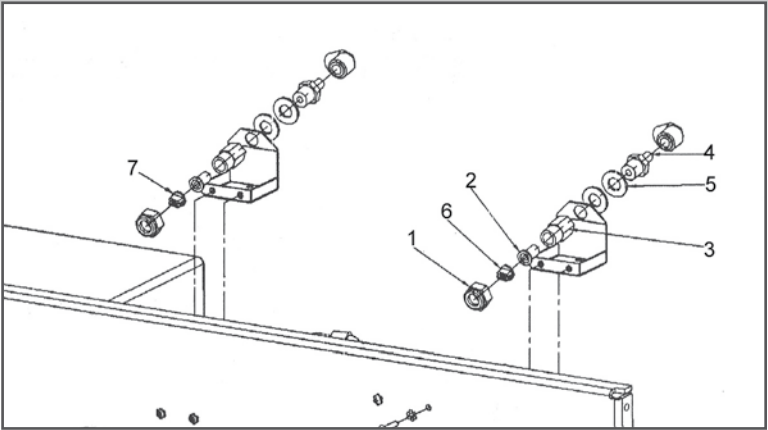
VAC HEAD ASSEMBLY



DRAWING#	PART	DESCRIPTION
1	SV21	Squeegee (sold as each, 2 required)
2	SA0283	Squeegee Bracket REAR
3	SVA4	Squeegee Bracket FRONT

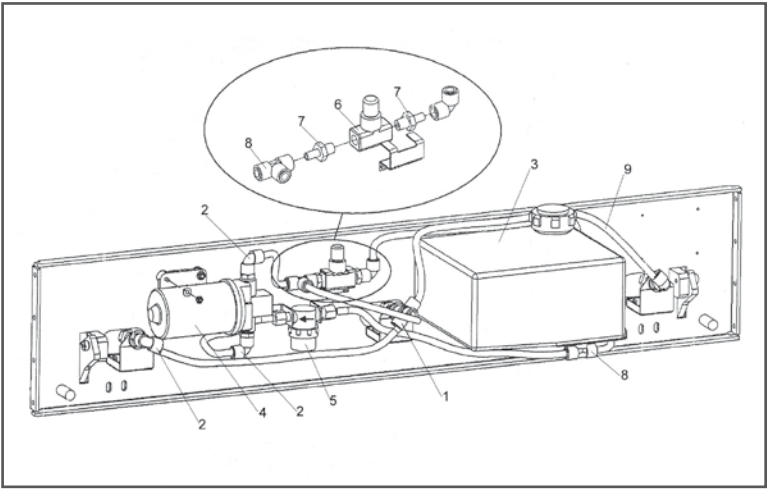
FRONT PLATE ASSEMBLY - FRONT VIEW

DRAWING#	PART	DESCRIPTION
1	294002404	Tip Retainer Unijet 1325
2	294002401	Strainer Check Valve
3	294002403	Nozzle Body
4	294115071	Stem Adapter
5	948975172BG	Washer 17/32 x 1 1/2
6	294002407	Spray Nozzle Unijet 1501 (for use with left or right nozzle assy only)
7	294002406	Spray Nozzle Unijet 8003 (for use with center nozzle assy only)



FRONT PLATE ASSEMBLY - REAR VIEW

DRAWING#	PART	DESCRIPTION
1	294115076	Cross, Union, Quick , Connect
2	294115073	Elbow, Union, Quick, Connect
3	294115525	Cleaner Tank
4	02206	Cleaner Pump 110V
4a	294115287	Cleaner Pump 220V
5	04322	Filter Bowl
5a	04322-1	Screen Mesh
6	04112	Volume Valve
6a	294115637	Flow Control Valve Assembly
7	294115071	Stem Adapter
8	294115074	Tee, Union, Quick, Connect
9	04128	Tube, Tygothane (specify lenght in feet)



MANUALS

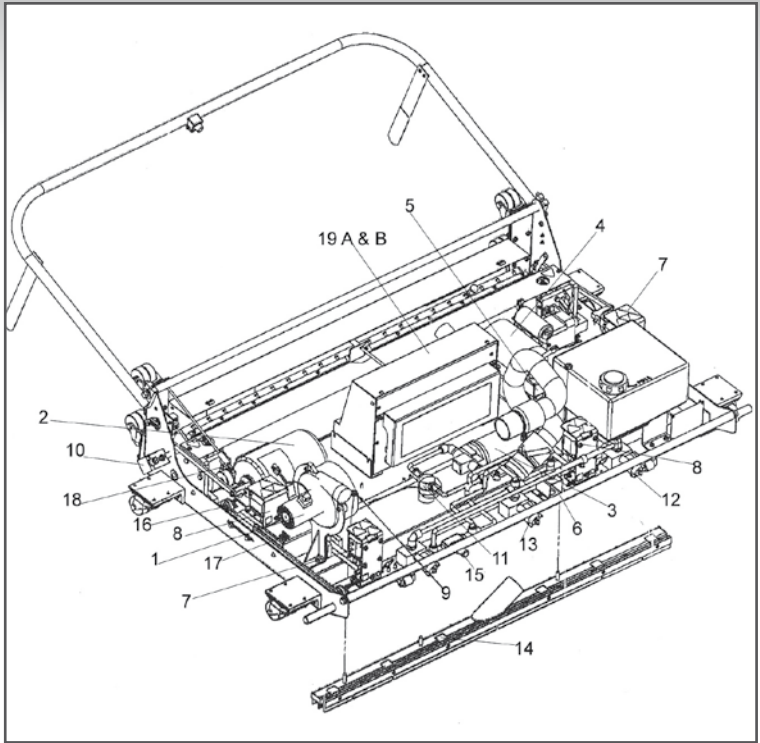
PART	DESCRIPTION
FM 0060	Century Programmer Guide
RP 49 - 1	Operating & Parts Manual - LC 100
RP 128	Operating & Parts Manual - Gemini, Gemini Plus, Silver Bullet
400294005	Operating & Parts Manual - Express
294005007	Operating & Parts Manual - Summit
294005021	Operating & Parts Manual - Summit S

UPGRADE KITS / SPARE PARTS KITS

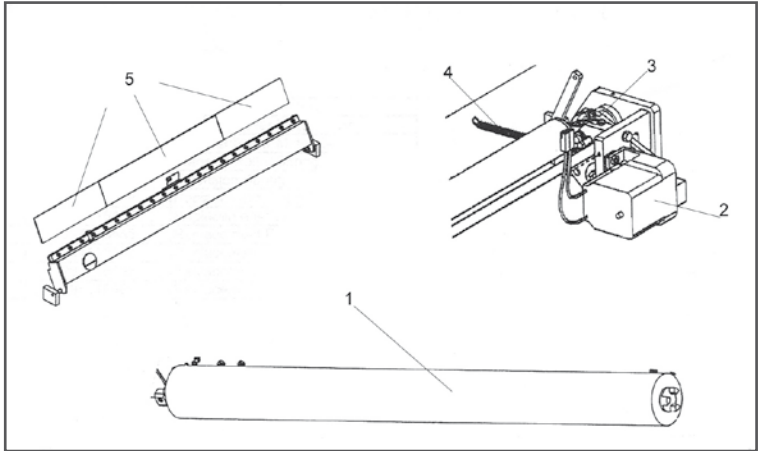
PART	DESCRIPTION
294005100	Cleaner Pad Upgrade Kit
294300001	Tank Heater Kit for Summit
294300002	Tank Heater Kit for Magnum
RP 210 Spare	Spare Parts Kit-Summit, Magnum 110V
RP 211	Spare Parts Kit - Summit, Magnum 220V
RP 53 - 1	Spare Parts Kit - 100 Model C & D Solid State
RP 121	Spare Parts Kit - VLS
612150001	Spare Parts Kit - Summit CE

DRAWING#	PART	DESCRIPTION
Common Parts		
2294115049		Buffer Belt
6294115300		Optical Sensor Pin Deck
7294002032		Solenoid 115V
294002274		Solenoid 220v
8294002033		Solenoid 115v
294002275		Solenoid 220v
10294115299		Optical Sensor Approach
1104322		Filter Bowl
04322-1		Filter Mesh Screen
14SV72		Squeegee (2 required)
16SA0244		Guide Wheel Assy
A0024		Guide Wheel Spring
A0025		Guide Wheel Washer
17294115404		Drive Wheel
18A5558		Idler Spring
115v Fuses		
n/a294115366		2A Cleaner Pump
n/a294115166		4A Oil Transfer Roller
n/a294115373		10A Vacuum Motor
n/a294115374		6.25A Drive Motor
n/a294115375		8A Buffer/Vac Solenoids
n/a2941153419		500mA Logic Board
220v Fuses		
n/a294115365		1A Cleaner Pump
n/a294115366		2A Oil transfer Roller
n/a294115367		5A Vacuum Motor
n/a294115166		4A Drive Motor
n/a294115166		4A Buffer/Vac Solenoids
n/a2941153419		500mA Logic Board
MODEL A ONLY - Metal Hood Cover		
1294115042		Vacuum motor 115v
294115343		Vacuum motor 220v
2294115038		Buffer Motor 115v
294115270		Buffer Motor 220v
302206		Cleaner pump 115v
294115287		Cleaner Pump 220v
4294115039		Drive Motor Assy 115v
294115326		Drive Motor Assy 220v
5294115046		Encoder
9A8307		Tank Seal
12294115067		Nozzle Head
294115068		Nozzle Tip - Orange
294115070		Viton Washer
13294115067		Nozzle Head
294115069		Nozzle Tip - Green
294115070		Viton Washer
15294115075		Flow Valve Assy
19294115423		Control Box Assy 115v
294115424		Control Box Assy 220v
MODEL B ONLY - Plastic Hood Cover		
1294115727		Vacuum motor 115v
294115728		Vacuum motor 220v
2294115038		Buffer Motor 115v
294115722		Buffer Motor 220v
3294115729		Cleaner Pump Assy 115v
294115730		Cleaner Pump Assy 220v
4294115610		Drive Motor Assy 115v
294115628		Drive Motor Assy 220v
5294012151		Counter Wheel Assy
9A8307		Tank Seal
294002547		Tank Seal for 220V Machine Serial # 200910120004 and Up
12294002403		Nozzle Body
294002047		Spray Nozzle Right/Left
294002401		Strainer /check Valve
13294002403		Nozzle Body
294002406		Spray Nozzle Center only
294002401		Strainer /check Valve
15294115636		Flow Valve Assy
19294115659		Control Box Assy 115v
294115658		Control Box Assy 220v
n/a294002254		5A Buffer Motor Fuse 220v
294002326		5A Buffer Motor Fuse 115v

EXPRESS



OIL SECTION & FUSES



DRAWING#	PART	DESCRIPTION
1	SA1182	Buffer Tube Assembly
2	294115558	Transfer Roller Motor 110V
	294115559	Transfer Roller Motor 240V
3	A0583	Transfer Roller Spring
4	294115171	Extension Spring Model A
4a	294115711	Buffer Spring Model B
5	294115490	Replacement Foam Strip SHO
	294115488	Replacement Foam Strip HO
	294115486	Replacement Foam Strip MHO
	294115484	Replacement Foam Strip MO
	294115482	Replacement Foam Strip MLO

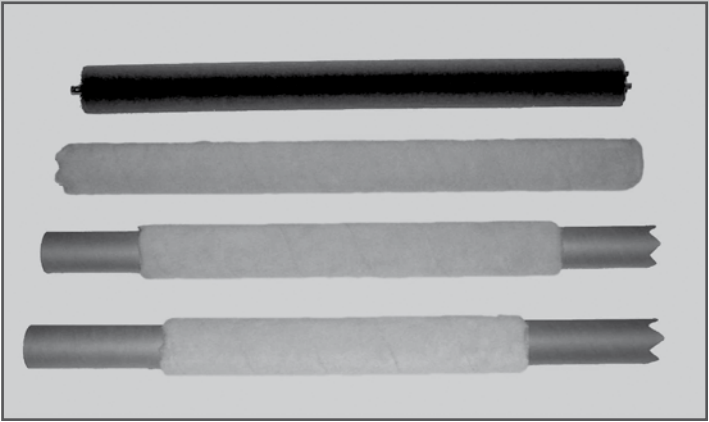
CONDITIONER APPLICATION BUFFERS

BUFFING SECTION COMPONENTS & ACCESSORIES

A0420	Brush Drive Coupling End
80024	Buffer Tube Core Replacement
A0548	Buffer Cover Retaining Ring
RP43	Buffer Pressure Adjustment Tool
SA1105	Buffer Drive Bearing - SB, Magnum, PC
SA1106	Buffer Idler Bearing - SB, Magnum, PC
SA3014	Buffer Adjusting Block Assembly
A0078	Rubber Bearing - Drive Bearing
A0409	Buffer Bearing Return Spring
A8328	Solenoid Block - Gemini, AVLS, PC
A0344	Buffer Linkage Extension - Gemini, PC

BELTS

03038	Buffer Motor Belt - 100A, Ultralite, Gemini
03042	Buffer Motor Belt - 100B, C, D
03065	Buffer Motor Belt - ALC, Advantage
03037	Cam Box Belt - 100
03099	Buffer Drive Belt



BUFFER TUBE AND COVER ASSY

SA1182	Buffer Brush Assembly
RP110 LDD	Buffer Tube Cover
294002302	10 - 10 Buffer Tube Mohair Cover
294002301	7 - 7 Buffer Tube Mohair Cover
SA1106	Buffer Idler Bearing
SA3014	Buffer Adjusting Block Assy
A0079	Rubber Bearing - Drive Bearing
A0409	Buffer Bearing Return Spring
A8328	Solenoid Block - Gemini, AVLS, PC
A0344	Buffer Linkage Extension - Gemini, PC

OIL TANKS & ACCESSORIES

OIL TANKS, FELTS & ACCESORIES

RP59	Oil Tank Repair Kit
B1032C	36" HF Oil Tank Felt Grey
B0227	Oil Tank Retainer
SA313828	28" Oil Tank Assy - 100
SA108836	36" Gemini Style Oil Tank Assy
SA6525	Dip Stick Assy
SA1096	Dip Stick Assy - Gemini
A0263	Viton Dipstick Washer
04093	Viton Washer - Gemini

OIL TANK FUNNELS, SHIMS & GAUGE

RP42	Small Plastic Funnel w/ Screen
RP115	Large Plastic Funnel w/ Screen
RP116	Long Neck Funnel
SA5044	Calibration Kit w/ Shims
RP72	Oil Tank Pressure Gauge Kit w/ Shims
SA1227	Oil Tank Fill Bottle
RP59-1	Wick Insertion Tool
RP72A1	Oil Tank Pressure Gauge Only

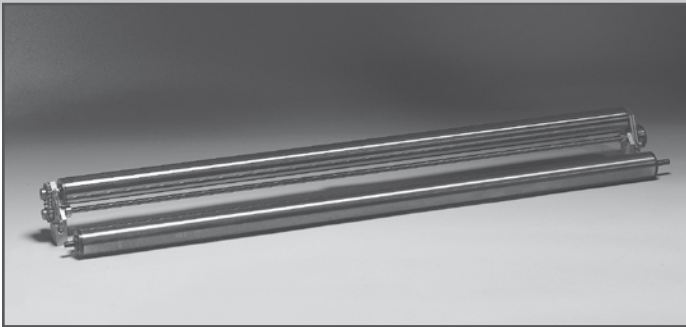
REPLACEMENT TANK PIVOTS & PARTS

SA1065	Oil Tank Adjusting Pivots - 100 & 300
SA1098	Oil Tank Adjusting Pivots - Right - Gemini
A0632	Tank Adjusting Bolt
A0633	Tank Adjusting Pivot Rod
04158	Retaining Ring
294002446	Double Caster Bracket RS

TANK LINKAGE & SPRINGS

SA0299	Headless Hitch Pin
A0603	Tank Pull Rod - Gemini, PC, 100 C & D
A0553	Tank Push Rod - 100 A & B
A5037	Oil Tank Linkage Spring
A5038	Oil Tank Return Spring - 100 C & D, SB
A0231	Tank Tilt Spring Retainer Front - 100 A & B
A0232	Tank Tilt Spring Retainer Rear - 100 A & B
A0233	Oil Tank Spring - 100 A & B
SA1186	Shut Off Arm Spring W/C

TRANSFER ROLLERS



TRANSFER ROLLERS AND ASSEMBLIES

SA3026	Transfer Roller Assy - 100, Gemini, ALC
SA0296	Stainless Transfer Roller Only
A0583	Transfer Roller Spring
SA1023R	Roller Support Arm Assy - Right
SA1023L	Roller Support Arm Assy - Left
294115407	Roller Shaft Support Arm Assy
294002025	Guide Roller Spring
294002011	Guide Roller Assy - HVO

ELECTRICAL COMPONENTS

ELECTRICAL FUSES

02150	4A Slow Blow Fuse
02010	6.25A Slow Blow Fuse
02406	10A Slow Blow Fuse
02075	15A Slow Blow Fuse
02522	20A Slow Blow Fuse
02212	10A Fuse
02213	30A Fuse
80055	Fuse Holder

CE FUSES

294002246	Fuse Cartridge 500 MA
294002252	Fuse 2000A 5x20mm
294002253	Cartridge Fuse 3.15 A
294002254	Cartridge Fuse 5A

ELECTRICAL SWITCHES

02009	Start/Stop Switch
0276	Interlock Switch
02023	Reversing Micro Switch
02293	Cam Box Micro Switch w/ Roller
02036	Toggle Switch On/Off
02147	Manual Reverse Switch
02335	Start Push Switch - Magnum, PC Handle

REPLACEMENT DASH LAMPS

02141	Lamp 110V Solid State Machines
02165	Lamp 220V Solid State Machines
RP3	Lamp Non-Solid State Machines
02142	Resistor, 1.25K
02140	Lamp Socket-Solid State Machines
02517	Red Power Light
02518	Green Power Light

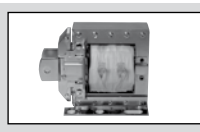
CIRCUIT BOARDS

SA1111	Circuit Board Assy 220V - Solid State Machines
SA6526	Circuit Board Assy 110V - Solid State Machines


POWER CORDS

SA6012	14/3 110V Power Cord Assy
SA1107	12/3 110V Power Cord Assy
SVA31	14/3 220V Power Cord Assy
02338	GFIC End Only
02044	Male Plug End 110V
02044-1	Male Plug End 220V
02090	Female Plug End 110V
02529	Female Plug End 220V
02089	Flush Mount 3 Wire Plub 110V
02528	Flush Mount 3 Wire Plub 220V
SA9017	Cord Arm Assy
B5027	Cord Arm Bracket
04004	Cord Arm Wheel
A0279	Cord Arm Spring

SOLENOIDS

	294002033	110V Solenoid - RH Terminals
	294002032	110V Solenoid - LH Terminals
	294002031	Oil Tank Solenoid 100V - SB, PC

MOTORS, CONTACTORS, PUMPS & REPLACEMENT PARTS

	02206	VLS Cleaner Pump 110V
	294115287	VLS Cleaner Pump 220V
	80033	Pump Rebuild Kit
	RP107	Buffer Motor Prewired 110V
	RP186	Buffer Motor Prewired 220V
	RP99	Buffer Motor Shut-Off Kit- 100C Solid State Machine
	A0597	U Joint
	A0598	U Joint Shaft
	02525	10:1 Drive Motor 110V
	294115325	10:1 Drive Motor 220V
	02394	Drive Motor Capacitor 110V
	RP197	Electronic Brake Kit 110V
	SA1200	Electric Break Assy 220VRP1 Points - Lower Reversing Unit

CLEANER REPLACEMENT PARTS

VACUUM HEAD ASSEMBLIES & REPLACEMENT PARTS

SV72	Blue Squeegee - VLS 89, 90 & Plus
SV21	Orange Squeegee - VLS, 88, SB, ALS, Chariman
SVA4	Squeegee Bracket Front
SA0283	Squeegee Bracket Rear
A8340	Vacuum Head Tension Rod - SB, Gemini, AVLS
A9032	Vacuum Head Assy - SB, Gemini, AVLS

CLEANER APPLICATION REPLACEMENT PARTS

SA0256	Cleaner Pad Assy - Gemini, AVLS
A0784	Cleaning Fabric Support Rod
B8032	Cleaner Pad Sponge - Gemini, AVLS
RP156	VLS Nozzle Replacement Kit
04161	Spray Jet body - VLS
04163	Spray Jet Cap & Washer - VLS
041230	Spray Jet Tip - VLS
RP127	Valve Body End Cap Diaphragm
C0776	Fabric Cleaning System

CLEANER TANK ASSEMBLIES

C8060	220V Cleaner tank Assy - SB, Gemini, AVLS
SA0263	Cleaner Tank Assy - Chairman, Magnum, Summit
SVA51	VLS Plus Clean Tank Assy
04322	Filter Bowl - Chairman, Magnum
04160	Clean Tank Filter - VLS

MACHINE COMPONENTS

LANE MACHINE REPLACEMENT PARTS

04071	Caster Wheel Assy
04142	Caster Assy - VLS
A0586	Pivot Caster Block
SA3012	Nylon Duster End Plate Roller Assy
80047	Urethane Duster End Plate Roller Assy
SA0175	Urethane Dash End Roller Assy - Left
SA0176	Urethane Dash End Roller Assy - Right
SV90	Urethane Front Lane Roller - VLS
SV91	Front Lane Roller Axle - VLS
SV92	Urethane Rear Lane Roller - VLS
SV93	Rear Lane Rolle Axle
294115404	Drive Wheel Left & Right
A0041	Drive Shaft Bearing
SA1005	Base Plate Guide Wheel Assy
A0022	Base Plate Guide Roller Shaft
A0024	Base Plate Guide Roller Spring
A0025	Base Plate Guide Roller Spacer
SA1006	Front Guide Wheel Assy
A0030	Front Guide Roller Spring
SA3020	Front Guide Bracket Assy - 100
SA6509	Front Guide Bracket Assy - SB, Gemini, AVLS

COMMON REPLACEMENT PARTS

02129	Cleaner Solenoid Valve, 110V - SB, Gemini, AVLS
02254	Cleaner Solenoid Valve, 220V - SB, Gemini, AVLS
04353	Brass Elbow Fitting for Cleaner Valve - Chairman
02785	Cleaner Valve - Magnum
RP125	VLS Volume Control Valve
04137	1/4 x 1/4 Panel Mount Coupling Body
04138	1/4 x 1/4 Coupling Insert
A0271	Spring - Cleaner Pad & Vac Head - SB, Gemini, AVLS
A8035	Cleaner Manifold Tube
P0501-72	Brass Orifice Plyg #72 Hole
02785	Kip Valve

DUSTER REPLACEMENT PARTS

A01671	Black Ruber Duster Pressure Roller
SA6514	Carpet Pressure Roller
A0274	Duster Cloth Spring
SA1062	Duster Cloth Drive Tube
A5552	Duster Tube Support
A0271	Spring Duster

WASTE TANK ASSEMBLIES & SEALS

SA1129	Waste Tank Assy - SB, Gemini, Chairman, AVLS
SVA50 VLS	Waste Tank Assy w/ Removable Neck
SV96	VLS Plus Waste Tank Seal
04181	Insta - Gasket
A8307	Waster Tank Seal - AVLS
SV83	Vacuum Motor Tank - VLS Plus

START BOX REPLACEMENT PARTS

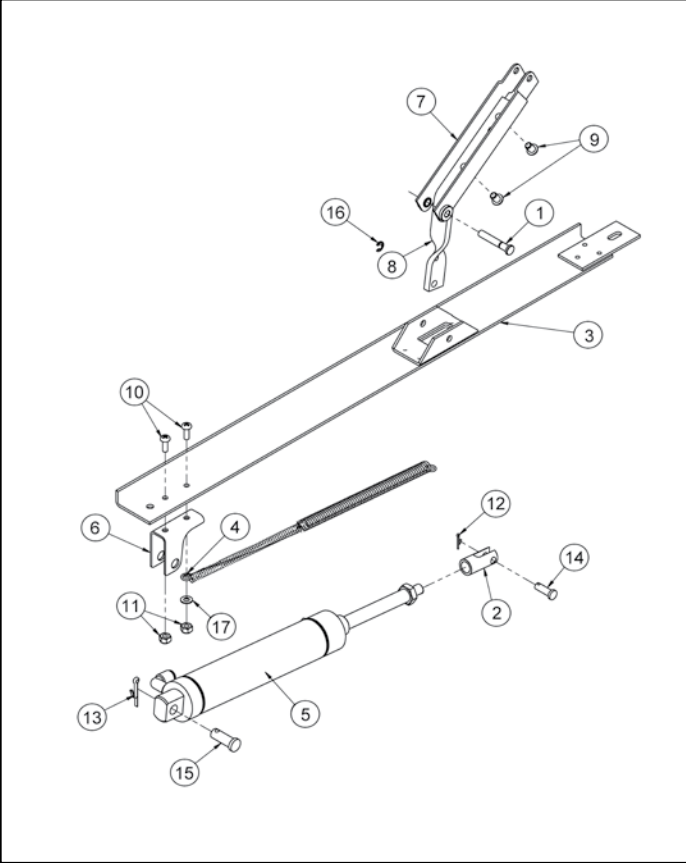
SA3027	Shuft Off Arm Assy - 100
SA1186	Shuft Off Spring w/ Cap
A0113	Shuft Off Arm Retract Spring
SA1048	Start Button Assy
04361	O Ring
A0269	Start Button Spring
SA1049	Shuft Off Arm Assy - SB

FRAME REPLACEMENT PARTS

B0198	Hood Hanger
043230	Hood Latch - Summit
RP58	Replacement Hardware Kit

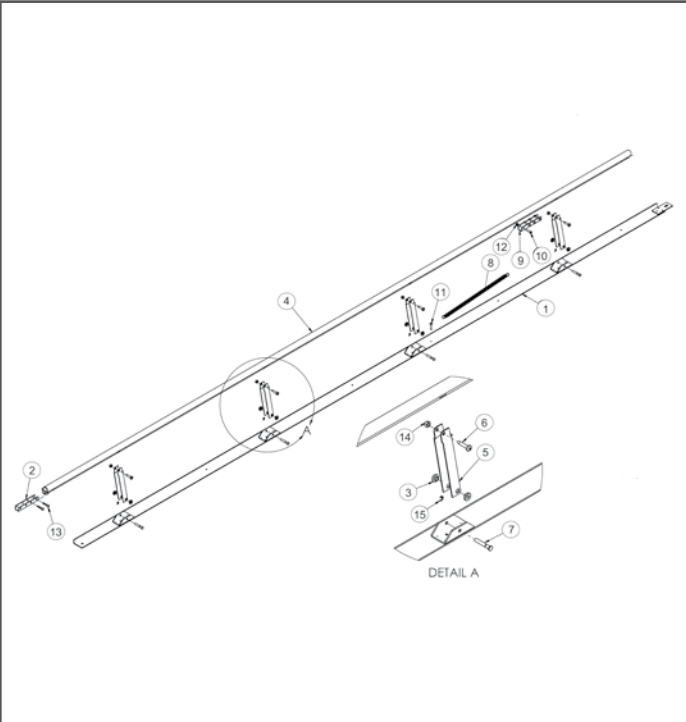
UPGRADE KITS

RP197	Electronic Brake Upgrade Kit 110V
SA1200	Electric Break Assy 220V



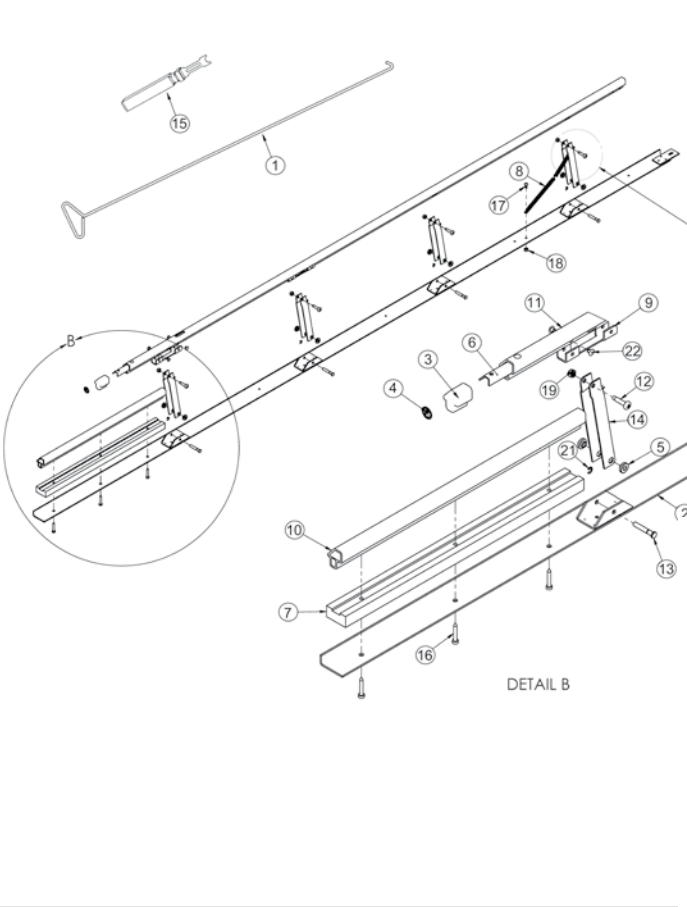
DRAW#	QTY IN SPARE PARTS KITS	PART#	DESCRIPTION
		049-007-173	Auto Opener Sub Asm Lh
		049-007-174	Auto Opener Sub Asm Rh (Not Shown)
1	1	049-007-148	Lower Pivot Pin
2	1	049-007-190	Clevis Modified
3	1	049-007-191	Angle Base Weldment L/H
		049-007-192	Angle Base Weldment R/H (Not Shown)
4	1	049-007-198	Spring
5	1	049-007-217	Bumpers Air Cylinder Asm
6	1	049-007-230	Mounting Bracket. Cylinder
7	1	049-007-260	Auto Bumper Upright Asm
8	1	049-007-262	Activator Arm
9	2	808-549-060	Screw 1/4-20 X 3/8, Soc, Button Hd, Black
10	2	813-240-082	Screw 10-32 X .50, Phil, Pan Head
11	2	838-740-002	Nut, Hex Nylock Locknut,#10-32
12	1	911-007-082	Cotter Pin 1/16 X 1/2
13	1	911-023-160	Cotter Pin 1/8 X 1
14	1	911-548-120	Pin 1/4 X 3/4, Clevis
15	1	911-564-200	Pin 3/8 X 1", Clevis
16	1	919-015-055	E-Clip M5
17	1	948-545-072	Washer.#10, Flat. Zinc

8' BUMPER ASSEMBLY LH 049-007-007



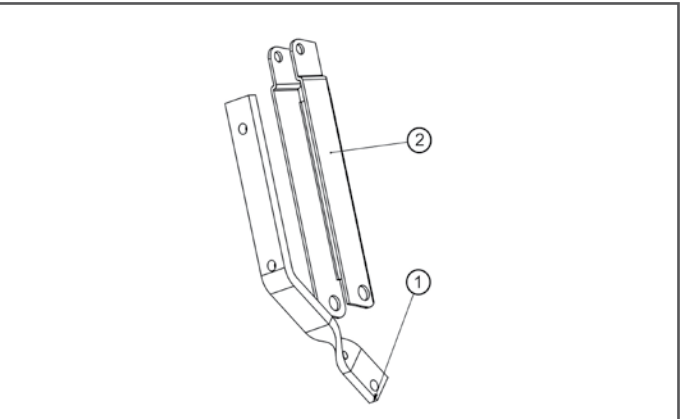
DRAW#	QTY IN SPARE PARTS KITS	PART#	DESCRIPTION
	-	049-007-007	10' Section Bump Assy (Less Items 8-12)
1	1	049-007-020	Angle Base Weldment 10' L/H
2	1	049-007-029	U-Bracket
3	8	049-007-042	Bushing
4	1	049-007-075	10' Rail Lh/Rh Side
5	4	049-007-081	Upright Bracket
6	4	049-007-124	Shdlr Bolt M6 26L Phil 3
7	4	049-007-148	Lower Pivot Pin
8	1	049-007-178	Return Spring
9	1	049-007-179	Spring Hook Bracket
10	4	812-539-160	Screw #10-24 X 1" Pan Head Phillips #2
11	1	821-540-910	Screw, #10 X 1" Self Drilling Oval Head Phillips
12	4	839-539-002	Nut Lock, #10-24, Nylon Insert
13	2	863-050-257	Screw M5 25L Pan Cut
14	4	872-062-017	Nut M6-1 Nylon Insert
15	2	919-015-055	E-Clip M5

8' BUMPER ASSEMBLY RH 049-007-006



DRAW#	QTY IN SPARE PARTS KITS	PART#	DESCRIPTION
		049-007-006	8' Bumper Assembly Lh
		049-007-009	8' Bumper Assembly Rh (Not Shown)
1	-	049-007-011	Bumper Gutter Key
2	1	049-007-017	Angle Base Weldment 8' Lh
	-	049-007-016	Angle Base Weldment 8' Rh (Not Shown)
3	1	049-007-022	Bumper End Cap Lh
	-	049-007-023	Bumper End Cap Rh (Not Shown)
4	1	049-007-024	Warning Label (Hand)
5	8	049-007-042	Bushing
6	1	049-007-056	Rh Or Lh Steel Insert
7	1	049-007-062	Wood Spacer
8	1	049-007-068	Upright Spring
9	2	049-007-076	H Bracket
10	1	049-007-079	Filler Piece L/R Side
11	1	049-007-092-X	8' Rail L/H Assembly
	-	049-007-091-X	8' Rail R/H Assembly (Not Shown)
12	4	049-007-124	Shdlr Bolt M6 26L Phil 3
13	4	049-007-148	Lower Pivot Pin
14	3	049-007-081	Upright Bracket
	-	049-007-093	H Bracket Upgrade - [Items 9 (2) & 21 (10)]
15	-	294-007-170	E-Clip Tool
16	3	861-482-307	Screw M4.8 30L Hex Form
17	1	863-050-127	Screw M5 X 12 Phil Pan
18	1	872-052-017	Nut M5 Nylon Insert
19	4	872-062-017	Nut M6- 1 Nylon Insert
20	1	911-023-160	Cotter Pin 1/8 X I
21	4	919-015-055	E-Clip M55
22	8	938-205-101	Rivet Blind Alum M5 10L

NEW & IMPROVED - AUTO OPENER ASSEMBLY



049007133	Activator Arm, Bracket & Hardware Kit
Each kit includes the following:	
049007260	Auto Bumper Upright Assy.
049007262	Activator Arm
808549060	Button Head Screw Black 1/4-20 x 3/8 (qty 2)

XS BUMPERS VER 3	
Plastic Rail with the connector between rail being a small barrel shaped pin inserted in the side of the rail.	
PART#	DESCRIPTION
01416	6-32 Nylon Insert Locknut Pltd
948648092	Wshr-.251X.597X.072
7024710800050	Th Tap Screw #8 X 1/2"
7036002520000	1/4-20 Nylon Nut
7050018048004	3/16" X 31/64" Flat Washer
7080300000100BG	Cap, Fastener, Bag Of 5
843149002BG	Nut-Kep 1/4-20 Wash Bag(10)
A000820	Rod Clevis For A-0008-10
A000910	Air Cylinder
A000930	Fitting Straight 1/8" Pipe X 1
A000930	Fitting Straight 1/8" Pipe X 1
A000942	Plug 1/8 Pipe With .040 Hole (
A000950	Solenoid Valve Asy. - 12Vdc -
BUMBOXBCU2	Bumper Interface Bcuil Bx Xs
M0009014	Pivot Plate Rh
M0009017	Pivot Plate Lh
M0009064	Q Cylinder Mount Plate Rh
M0009067	Cylinder Moun Plt Lft
M000907	Flanged Bearing St-1216
M000908	Sleeve Bearing SS-812
P000962	Common Bumper Ball Rail
P000967	Bumper Rail Arm
P000968	Bumper Rail Connect Link
P000969	Bumper Rail Arm Pin
P000971	Bumper Start Finger
S0801	Sensor Lift Cam Spring Sm
SUB067	Power Supply 110Vac

XS BUMPERS VER 2	
Plastic rail with the connector between rails being a plastic screw in the top of the rail sections.	
PART#	DESCRIPTION
049007123	Bumper Air Valve Assembly
XS302	Qubica Cylinder
XS303	Mount Bracket Plated
XS305	Pivot for Cylinder Mount
XS307	Valve Mount Plate
XS308	Clevis for Cylinder
XS309	Male Connector 1/8" to 1/4" Tu
XS310	Screw Asm
XS311	Molded Opener Arm
XS312	Plastic Barrel Snap Asm
XS312	Plastic Barrel Snap Asm
XS313	Wood Screw for Mount Bracket
XS313	Wood Screw for Mount Bracket
XS314	Spring with Washer
XS315	Tee 1/4" x 1/4"x 1/4"
XS316	Tee with Reducer 3/8" to 1/4"
XS317	Molded Arm, Standard
XS318	Plastic Rail Only 7'
XS319	Plastic Rail Asm 16"
XS320	Rail Connector
XS321	Plastic Screw for Rail Connect
XS322	End Cap
XS324	Plastic Rail Asm 7'
XS327	Plug 1/4", for Air Cylinder
XS328	Shoulder Bolt Asm
XS329	Molded Arm Asm, Auto Opener
XS330	Arm Asm, Standard
XS342	Jig, for Mount Plate locating
XS343	Install Manual

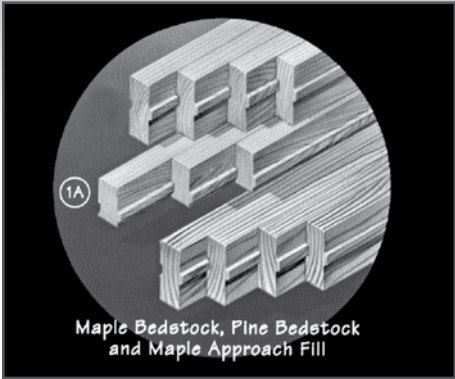
XS BUMPERS VER 1	
Aluminum bumper rail material.	
PART#	DESCRIPTION
SPAPLABUMXS049	XS Cylinder Lift Pivot
SPAPLABUMXS048	Pivot Arm
SPAPLABUMXS104	XS Zip Bag #1 (Per Lane)
SUB00047	Rail Connector
SUB00046	Cap Plug, Black
SUB101	Front Ramp Stationary
SUB099	Front Ramp Movable - Left
SUB100	Front Ramp Movable - Right

Q-BUMP I	
Hinged gutter bumper system.	
PART#	DESCRIPTION
QB6	Bumper Contact Strip
SUB117	Cylinder Asm - Retrofit QB1

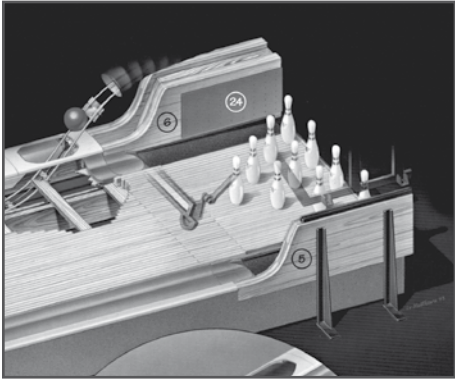
HWY 66 BUMPERS	
Highway 66 bumpers.	
PART#	DESCRIPTION
P000969	HWY66 Bumper Rail Arm Pin
P000967	HWY66 Bumper Rail Arm
P000968	HWY66 Bumper Rail Connect Link
P000971	HWY66 Bumper Start Finger
P000976	HWY66 Arm Pivot Pin
P000962	HWY66 Common Bumper Ball Rail
P0009672	HWY66 Start Bumper Ball Arm
7016410632150	6-32 X 1 1/2" MA SC RH Soc

HIGHWAY 66 BUMPER BALL LOCK ASSEMBLY	
PART#	DESCRIPTION
SB000911	HWY66 Bumper Ball Lock Asm
9105042	Compression Spring
M000911	Bracket
M000912	Flange Bearing
M000913	T-Lock Shaft
7052034056003	11/32" X 9/16" SPACER WASHER

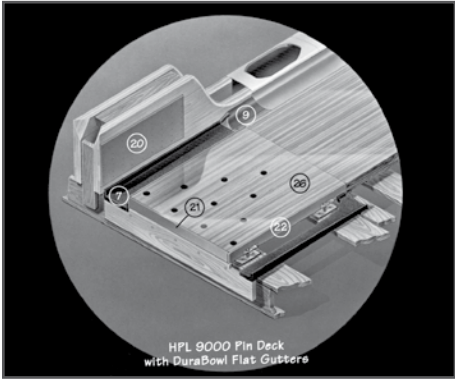
LANE BEDS & APPROACHES



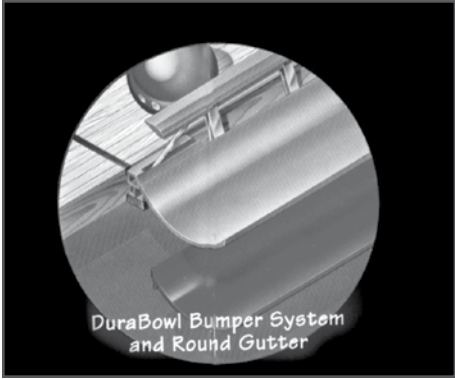
PIT END SECTION / FIBRE PARTS



FLAT GUTTER & ACCESSORIES

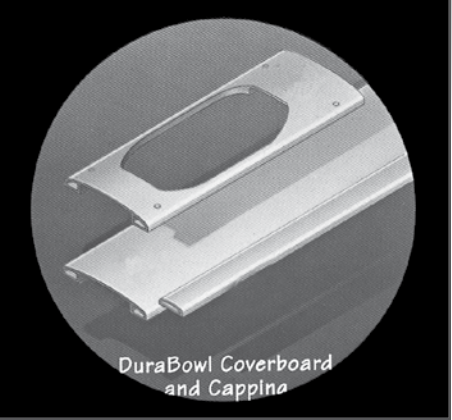


DURABOWL LANE PARTS



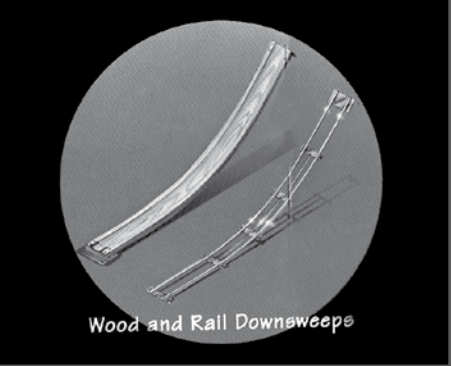
1a	049009105	Patching Stock, Maple (random lengths 2 1/2' x 7') 1 5/64" x 3/4"
	049009205	Patching Stock, Pine (random lengths 2 1/2' x 7') 1 5/64" x 3/4"
	909172260	Wood Dowel, Maple 11/16"
	909172000	Wood Dowel, Maple 1/2"
	909084000	Wood Dowel, Pine 11/16"
	045006503	Wood Dowel, Walnut 11/16"
	045006502	Wood Dowel, Walnut 1/2"
	045006501	Arrow Darts
	049003116	DuraBowl Edge Boards Strip
	049006620	Edge Board with Fibre Insert
	049002600	12" Pil Header Plank (Tail Plank) with Durabowl Reinforcement (1 3/4" x 12" x 60") Requires 5. #20-4" F.H.W.S.
	049006075	9" Pit Header - no reinforcement
	049001751	AMF Style Kickback with Durabowl Plate - RH
5	049001753	AMF Style Kickback with Durabowl Plate - LH
6	049001752	AMF Style Kickback with Durabowl Plate - Double
24	049001721	Fibre Kickback Plate 15 x 33"
	049001001	1/2" Foul Line Fibre (1/2" x 1/2" x 42")
	049001002	3/4" Foul Line Fibre (1/2" x 3/4" x 42")
	910537280	3/16" Fibre Dowel (2 per Pin Spot, 6 per Foul Line)
	049001500	1/2" Pin Spot Fibre (for replacement)
	049001501	3/4" Pin Spot Fibre
7	049007223	Durabowl Flat Gutters (2 per box - 1 lane fits AMF or Brunswick)
	049000635	54" Flat Gutter Assembly RH - For Wood Flat Gutters. Includes 2 RH or LH and 12 maple wood dowels 11/16". All lanes require 12 - #16 1 3/4" F.H.W.S.
	049000625	54" Flat Gutter Assembly LH - For Wood Flat Gutters. Includes 2 RH or LH and 12 maple wood dowels 11/16". All lanes require 12 - #16 1 3/4" F.H.W.S.
	049006043 - X	Durabowl Gutter End Ramp (blue, grey, brown)
	049007003-X	Durabowl 4 Piece set for Bumpers
9	610490238	Universal Gutter Block
	829642202	#12 x 1 1/4 Screw
	814852282	#16 x 1 3/4 Screw
	716008002	6 D Casing Nail
	049007200-X	14' 7" Bumper Gutter Section
	610494640 - X	Coupling Set (3) (blue, grey, brown) 1.5" - No Bumper
	614286072-X	1" Old Style without Bumpers
	610494639-X	1.5" With Bumpers
	049000575	Blue End Ramp
	049006043-N	Brown End Ramp
	049006043-G	Grey End Ramp
	610494970 - X	Gutter Section 15' (blue, grey, brown, red)
	610494964	Modified Round Gutter Grey No Bumper, 4 Piece Set.
	610494962	Modified Round Gutter Blue No Bumper, 4 Piece Set.
	610494963	Modified Round Gutter Brown No Bumper, 4 Piece Set.
	610490238	Universal Gutter Transition Block
	049000698	Durabowl 48" - 1/4" Round Fiber Board - For Wood Flat Gutters. Requires 9 - #10 x 1 1/4" screws, not included.
	049007003-X	Durabowl 4 Piece set for Bumpers
	049007200-X	14' 7" Bumper Gutter Section
	049001723	AMF Durabowl Kickback Plate 15" x 33" - Requires 1/4 lb. Kickback nails, not included.
	049001720	Brunswick Durabowl Kickback Plate 15" x 50" - Requires 1/4 lb. Kickback nails, not included.
	049006624	Durabowl Tail Plank
21	049006625	Durabowl 1" Edgeboard
22		

DURABOWL COVERBOARD & CAPPING



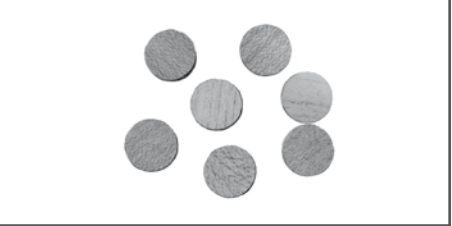
049008570	Durabowl Glow Coverboard - everything needed to install a complete run of Coverboards, foul line to kickback. 7 pieces of coverboard 10 1/2" x 96"
049008571	Durabowl Glow 1 Piece Coverboard - 8' x 96", requires 6 # 14 screws and plugs
049008573	Durabowl Capping Kit-Full Run (8 pieces)
049008574	Durabowl 1 Piece Capping - 2 3* 4" x 96", requires 5 # 14 screws and plugs
049008574	9/16" Diameter Plug
813247080	#14 x 1 1/4" Phillips Pan Screw
049008572	Durabowl Downsweep Enclosure
049008572	Durabowl Glow Downsweep Enclosure
049008576	Durabowl Solid Downsweep Enclosure
049009623	9/16" Coverboard Plugs (Bag of 77)
049009622	9/16" Capping Plugs (Bag of 43)
Q88019696	Qubica Coverboard
Q88015196	Qubica Capping

NEW STYLE RAIL TRACK



610494444	Track Shims
610496591	Adjustable Rail Downsweep
049006353	Rail Downsweep
049006362	Rail Track 67' 3" Section (8-8' sections, 1-3' 3" section)
049006360	Rail Plastic Runner 150' (2 per run)
049006363	Rail Track Hardware Kit
000029911	Underlane Track Shim
809849125	Bolt Hex Head Screw 1/4 - 20 x 3/4"
951148002BG	Lockwasher 1/4 - 20
809849085	Bolt Hex Head Screw 1/4 - 20 x 1/2"
000021186	Rail Track Clamp
049006359	Rail Adapter Plate

HPL / SPL PARTS



049009534	HPL Plugs 1/2 x 1/8 (Bag of 100)
049006772	Pin Deck Tan Plugs (Bag of 10)
049009534	HPL Glow Plugs 1/2 x 1/8 (Bag of 100)

WOOD SCREW & NAILS

049006387	#10 x 1 1/4" Phillips Flat Head Type 17 (HPL Overlay)
049006388	#10 x 1 3/4" Phillips Flat Head Type 17 (HPL Overlay)
829642202	#12 x 1/4" Phillips Flat Head Type 17
814852282	#16 x 1 3/4" Phillips Flat Head (Flat Gutter to Foundation)
814852402	#16 x 2 1/2" Phillips Flat Head (HPL Overlay)
814852482	#16 x 3" Phillips Flat Head 1 3/4" (HPL Lanes to Foundation - Lane Cleats, Used or prenailed Lanes)
814852562	#16 x 3 1/2" Phillips Flat Head (Maple Approach to Foundation)
814852642	#16 x 4" Phillips Flat Head
814852802	#16 x 5" Phillips Flat Head (HPL Pindeck to Foundation)
814859642	#20 x 4" Phillips Flat Head (Wood Lane to Fondation)
815842241	#12 x 1 3/4 Phillips Flat Head
049006680	#14 x 2" Screw
716002003	8D Coated Sinkers, 1lb.
716007003	8D Screw Nails 2 1/2", 1lb.
716002004	12D Coated Sinkers, 1lb.
716014011	Kickback nails, 1lb.

TOP COAT

100% SOLIDS UV



The bowling surface of our 100% Solids Top Coat sets it apart from other 100% solids top coats. It's more durable, and its surface gives more conditioner control. Non-flammable, VOC compliant, two component, no solvent odors. Can be used for resurfacing over QubicaAMF 100% Solids Base Coat, MU coats, EasyBase or other compatible base coats, or to recoat itself or other 100% solids top coats and compatible urethane finishes. Kit includes 1 can each Resin and Activator. Each kit coats 1 lane. 8 kits per carton.

Product Code 294007054 UV
Use Applicator
Product Code 294007032

QDT URETHANE UV



This moisture cure urethane top coat finish is truly simple to apply. Flows well, levels quickly and dries fast. Not VOC compliant. Excellent for recoats to control finish build-up after multiple recoats. Can be recoated over itself, QubicaAMF HS Urethane top coat or other compatible urethane top coats. 5 gallon metal container. Coats 8-9 lanes.

Product Code 294007057 UV
Use Applicator
Product Code 294007029 (with brackets)
Product Code 294147422 (with tape)

WATER BASED UV



Durability and bowlability in a water based top coat. Ideal for newer wood lanes, not yet injected. VOC compliant and non-flammable. Can be used as a recoat finish over itself or other compatible water based top coat finishes. 5 gallon polyethylene container. Coats 9-10 lanes.

Product Code 294007074 UV Water based topcoat 5 gal.
294007044-1 Water Based Catalyst
Use Applicator
Product Code 294007030 (with brackets)
Product Code 294147421 (with tape)

BASE COAT

100% SOLIDS



The bowling surface of our 100% Solids Top Coat sets it apart from other 100% solids top coats. It's more durable, and its surface gives more conditioner control. Non-flammable, VOC compliant, two component, no solvent odors. Can be used for resurfacing over QubicaAMF 100% Solids Base Coat, MU coats, EasyBase or other compatible base coats, or to recoat itself or other 100% solids top coats and compatible urethane finishes. Kit includes 1 can each Resin and Activator. Each kit coats 1 lane. 8 kits per carton.

Product Code 294007043
Use Applicator
Product Code 294007032

PREBASE STAIN



Recommended for use with all 100% solids base coats, MU Coats, EasyBase or other similar base coats. With a low cost per lane, PreBase Stain is an easy to apply, fast-drying, solvent-based urethane that penetrates the lane and prepares the lane for the base coat application. PreBase Stain strengthens wood structure, providing a superior foundation for the base coat. A slight pigmentation brightens lanes discolored by oil penetration. 5 gallon metal container. Coats 18-20 lanes.

Product Code 294007049
Use Applicator
Product Code 294007036 (with bracket)
Product Code 294147419 (with tape)

WATER BASED



QubicaAMF Water Based Base Coat is a high solids, flexible base coat finish that is durable, works to control oil penetration and minimizes feathering. It's ideal for newer wood lanes. VOC compliant, nonflammable with low odor. 5 gallon polyethylene container. Recommended two coats. Coats 5-6 lanes with two coats.

Product Code 294007044
294007044-1 Water Based Catalyst
Use Applicator
Product Code 294007030 (with bracket)
Product Code 294147421 (with tape)

MULTI-USE FINISH

"MU Technology is a chemical formulation breakthrough that manages the critical relationship between lane surface, lane conditioner, carry down effects and bowling ball dynamics to create good ball reaction. Let QUBICAAMF's MU finish help you help yourbowlers."

FORMULA MU™ UV



An excellent coating as either a 100% solids base coat or a high friction top coat. Formulated to provide an even stronger barrier to the problem of oil penetration when used as a base coat. When used as a top coat, FormulaMU adheres well to a traditional 100% solids base coat or to itself. FormulaMU gives a stronger back-end reaction than traditional 100% Solids Top Coats, has superior oil retention and minimizes the effects of carry down. VOC compliant, non-flammable with low odor. Kit includes 1 can each Resin and Activator. Each kit coats 1 lane. 8 kits per carton.

Product Code 294007085
Use Applicator
Product Code 294007032

EASY MU™ UV



Provides all the advantages of FormulaMU with easy application. EasyMU establishes a strong barrier to oil penetration. VOC compliant, non-flammable with low odor. Kit includes 1 each Resin and Activator. Each kit coats 4-5 lanes. One kit per carton.

Product Code 294007084
Use Applicator
Product Code 294147412
or 294007029

Need technical specification? or MSDS sheets? Visit our website <http://www.qubicaamf.com/download/>

APPROACH FINISH

WATER BASED APPROACH FINISH



Excellent durability and slide characteristics make Water Based Approach Finish an ideal approach finish. VOC compliant, non-flammable with low odor. One gallon coats 4 approaches.

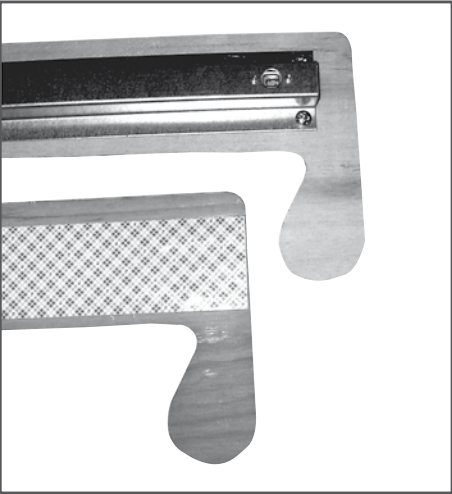
Product Code 294007151 1 gallon
294007050 4 x 1 gallon
Use Applicator
Product Code 294007031

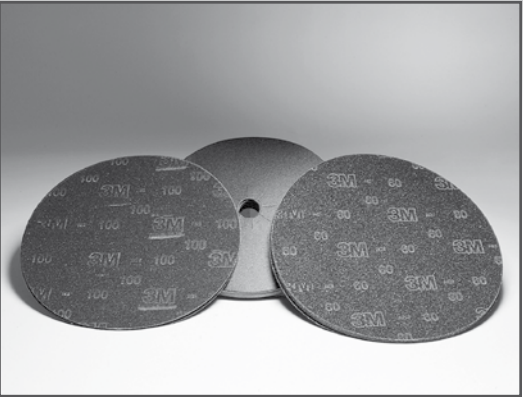
WATER BASED RECOAT APPROACH FINISH






Water Based Recoat Approach Finish is very durable and is ideal for use when recoating approaches. Helps control slide characteristics. Not recommended for use during approach resurfacing. VOC compliant, non-flammable, low odor. One gallon coats 5 approaches.



Product Code 294007161 1 gallon
294007066 4 x 1 gallon
Use Applicator
Product Code 294007031

REFILLS				
	APPLICATOR TYPE		WITH BRACKETS	WITH TAPE
	Easy Foam Applicator	294147412	Single Refill	294147413 Single Refill
		294007107	Four Pack	294007108 Four Pack
	Long Nap	294007064	Single Refill	294147418 Single Refill
		294007073	Four Pack	294007092 Five Pack
	Regular Nap	294007029	Single Refill	294147422 Single Refill
		294007069	Four Pack	294007096 Five Pack
	Regular Nap - Foam Back	294007030	Single Refill	294147421 Single Refill
		294007070	Four Pack	294007095 Five Pack
	Prebase Stain	294007036	Single Refill	294147419 Single Refill
		294007072	Four Pack	294007093 Five Pack

ROTARY ABRASIVES				
80 Grit Sanding Screen Discs.	Product Code	294007009-4 294007010-4	18" diameter 19" diameter	
100 Grit Sanding Screen Discs.	Product Code	294007010-3	19" diameter	
120 Grit Sanding Screen Discs.	Product Code	294007009-2	18" diameter	
320 Grit Sanding Screen Discs.	Product Code	294007100-1 294007101-1	18" diameter 19" diameter	
Resinite Lane Sanding Discs. 19" Diameter x 2"C.H. with 8 Slots 1 1/2" long.	Product Code	294007089-3 294007089-2 294007089-1	60 Grit 80 Grit 100 Grit	

ROTARY SANDING SUPPLIES
All QubicaAMF 3TM rotary sanding screens and disks are made with silicon carbide abrasive for strength and durability.

LANE APPLICATORS		
MULTI-PURPOSE	100% SOLIDS	WATER BASED APPROACH
		
MULTI-PURPOSE FINISH APPLICATOR KIT Complete kit for applying all Moisture Cure Urethane, Easy, Water Based and Lacquer lane finishes. Quick disconnect applicator with 1/4 turn fasteners. Side carrying handle adjusts to four positions. Applicator weights are designed for lateral adjustment. Order applicator refills separately. Product Code 294600301 Kit	100% SOLIDS APPLICATOR KIT Complete kit for applying all 100% solids lane finishes. Features foot operated release latch and durable construction. Designed for easy assembly, disassembly, storage and use. Applicator weights are designed for lateral adjustment. Kit includes two refills. Product Code 294600302 Kit 294007032 Two Refills	WATER BASED APPROACH APPLICATOR KIT Simple and easy to use, this applicator is traditional in design but lighter in weight. Two piece handle allows for easy transport between job sites. Includes one refill. Product Code 294600300 Kit 294007031 Single Refill

SUPPLIES	
	
RESURFACING & RECOATING SUPPLIES Epoxy Injection. Injection of wood lanes is a proven method of extending the life of your lanes and increasing customer satisfaction. Requires 2 parts Compound A to 1 part Hardener B. Product Code 294007081 Compound A 294007082 Hardener B	Epoxy Patch. Easy to use, makes lane repair simple. Product Code 294007075 (75 ml) 294007105 (300 ml)
Oil Lift. Oil absorbent compound. Product Code 294007078 50 lb. box	Epoxy Patch Trigger Dispenser. Supplied with 1:1 mixing plunger. Product Code 294007062 (75 ml) 294007106 (300 ml)
Tack Cloth. 150 yd. roll. Cut to 43" x 9", unfolds to 43" x 36". Product Code 294007080	Plunger. For use with QuibicaAMF Epoxy Patch. Replaces 50 ml plungers from older non-trigger dispensers. Product Code 294007099 (75 ml)
	Epoxy Patch Mixing Nozzle. Product Code 294007063 (75 ml) 294007104 (300 ml)

WHEN BOWLERS
FIND A COMFORTABLE BALL FAST,
THAT'S SMART.
WHEN IT ALSO IMPROVES
YOUR BOTTOM LINE,
THAT'S BRILLIANT.

NOW WITH THE
COMFORT FIT
GRIP™ 50% MORE
BEVEL, 100% MORE
COMFORT.
PATENT PENDING



SMART BALLS WITH THE COMFORT FIT GRIP



QubicaAMF XTREME™ SMART BALLS – Our urethane Xtreme Pearlized Smart Ball colors glow vibrantly under black light.*
You can order them individually or as a complete Smart Ball package in the following weights and colors with a two-year warranty. • 6 lb. lime • 7 lb. pink • 8 lb. peach • 9 lb. lavender • 10 lb. red • 11 lb. sky blue • 12 lb. green • 13 lb. lemon • 14 lb. tangerine • 15 lb. purple • 16 lb. blue

* Color, swirl, and glow intensity may vary from ball to ball and from catalog depiction.

SMART BALL PACKAGE



SMART BALL PACKAGE – Everything you need to get rolling is included in one complete package: fitting ball with stand, fitting poster and Xtreme™ Smart Balls.

Handicap Ball Ramp Delivery System
Product Code 199001103



QubicaAMF SMART BALL SYSTEM – Get your bowlers from your concourse to your lanes faster with our Smart Ball System. The fitting ball and color-coded chart mean bowlers grab the perfect ball in seconds. And your center is grabbing the profits moments later.

PUT YOUR BOWLERS
IN OUR COMFORTABLE
DUAL-SIZED RENTAL SHOES
AND WATCH THEM
BOWL LONGER.



FRESH CARE



Fresh Care aerosol and pump liquid spray effectively deodorize rental shoes as well as hard, nonporous surfaces and bowling equipment.

Product Code		
294007058	16 oz. Aerosol	
047000100	1 qt. Liquid	

RENTAL SOCKS



Sold by the dozen pair.

Product Code	Men's Ankle	038800001
	Men's Crew	038800003
	Women's	038800002



GLOW SHOE LACES (SOLD BY IN THE DOZEN)

Product Code	36"	038900036
	40"	038900040

GLOWING ACCENTS RENTAL SHOES

Bowlers will appreciate QubicaAMF dual-sized shoes for their comfort and obvious quality. You'll like the way they last and how they come in Unisex sizes or in both men's and women's widths (Premium) for better inventory control and flexibility. • Both men's and women's sizes are prominently marked on the shoe heel of all styles for easier substitution by staff • Rugged 360° genuine Goodyear® welt construction • Heavy-duty glow laces and eyelets • Built-in security works with Sensormatic® door sensors (Premium shoes only).

NEW
SUPERSAVE

A great value for a comfortable and affordable rental shoe. Constructed of durable polyurethane with microfiber soles for improved slide, padded collar and unisex sizing. Six-month limited warranty. Available in white/black in the following unisex sizes:



UNISEX	-	-	-	5	5.5	6	6.5	7	7.5	8	8.5	9	9.5	10	10.5	11	11.5	12	12.5	13	14	-	-	-
	-	-	-	6.5	7	7.5	8	8.5	9	9.5	10	10.5	11	11.5	12	12.5	13	13.5	14	14.5	15.5	-	-	-

PREMIUM

Constructed of full grain leather uppers with durable cowhide soles and a cushioned foot bed to give your bowlers an exceptionally comfortable bowling shoe. Built-in security works with Sensormatic® door sensors. One year warranty. Available in red/black in Men's and Women's sizes:



MEN	-	-	-	5	5.5	6	6.5	7	7.5	8	8.5	9	9.5	10	10.5	11	11.5	12	12.5	13	14	15	16	17	18
	-	-	-	6.5	7	7.5	8	8.5	9	9.5	10	10.5	11	11.5	12	12.5	13	13.5	14	14.5	15.5	16.5	17.5	18.5	19.5
WOMEN	5	5.5	6	6.5	7	7.5	8	8.5	9	9.5	10	-	11	-	-	-	-	-	-	-	-	-	-	-	-
	3.5	4	4.5	5	5.5	6	6.5	7	7.5	8	8.5	-	9.5	-	-	-	-	-	-	-	-	-	-	-	-

VELCRO®

Quick and easy to put on, these durable cowhide shoes have Velcro® fasteners, a clean and neat appearance, and simplify inventory control. Six-month warranty. Available in green/brown in the following sizes:



ADULT UNISEX	-	-	-	5	5.5	6	6.5	7	7.5	8	8.5	9	9.5	10	10.5	11	11.5	12	12.5	13	14	-
	-	-	-	6.5	7	7.5	8	8.5	9	9.5	10	10.5	11	11.5	12	12.5	13	13.5	14	14.5	15.5	-
YOUTH	-	-	-	-	-	-	-	-	-	-	1	1.5	2	2.5	3	3.5	4	4.5	-	-	-	-
	-	-	-	-	-	-	-	-	1	2	2.5	3	3.5	4	4.5	5	5.5	6	-	-	-	-
CHILD	6	7	8	9	10	11	12	13														

THERE'S MORE THAN ONE WAY TO GET IN TOUCH WITH QubicaAMF.

Making it easy for you to reach QubicaAMF
is just as important to us as getting our
quality products into your hands.

Contact us via phone, fax, web and e-mail and be served by people whose expertise and helpfulness make it easy for you to do business with QubicaAMF.

- ▼ To learn more about Genuine AMF and B-2 Parts and Supplies, or to locate a distributor near you, visit www.quibcaamf.com
- ▼ To speak to a live person, call 1-866-460-QAMF (7263)
- ▼ To reach us by fax, dial (804) 730-4464
- ▼ To join in on our interactive Products Forum that provides you with a direct link to discussion among peers worldwide, visit <http://forum.amfproducts.com>
- ▼ Still want to write? Send it to QubicaAMF Worldwide Consumer & Support Products, 8100 AMF Drive, Mechanicsville, VA 23111, USA
- ▼ Join our email club, The Supply Line. Simply visit www.theemailclub.com/QubicaAMF



WORLDWIDE HEADQUARTERS

8100 AMF Drive - Mechanicsville, VA 23111 - USA - Tel. (804) 569-1000 - Fax: (804) 559-8650 - Toll free 1-866-460-QAMF (7263)

EUROPEAN HEADQUARTERS

Via della Croce Coperta, 15 - 40128 Bologna - Italy - Tel. +39 051.4192.611 - Fax +39 051.4192.602

www.qubicaamf.com - info@qubicaamf.com